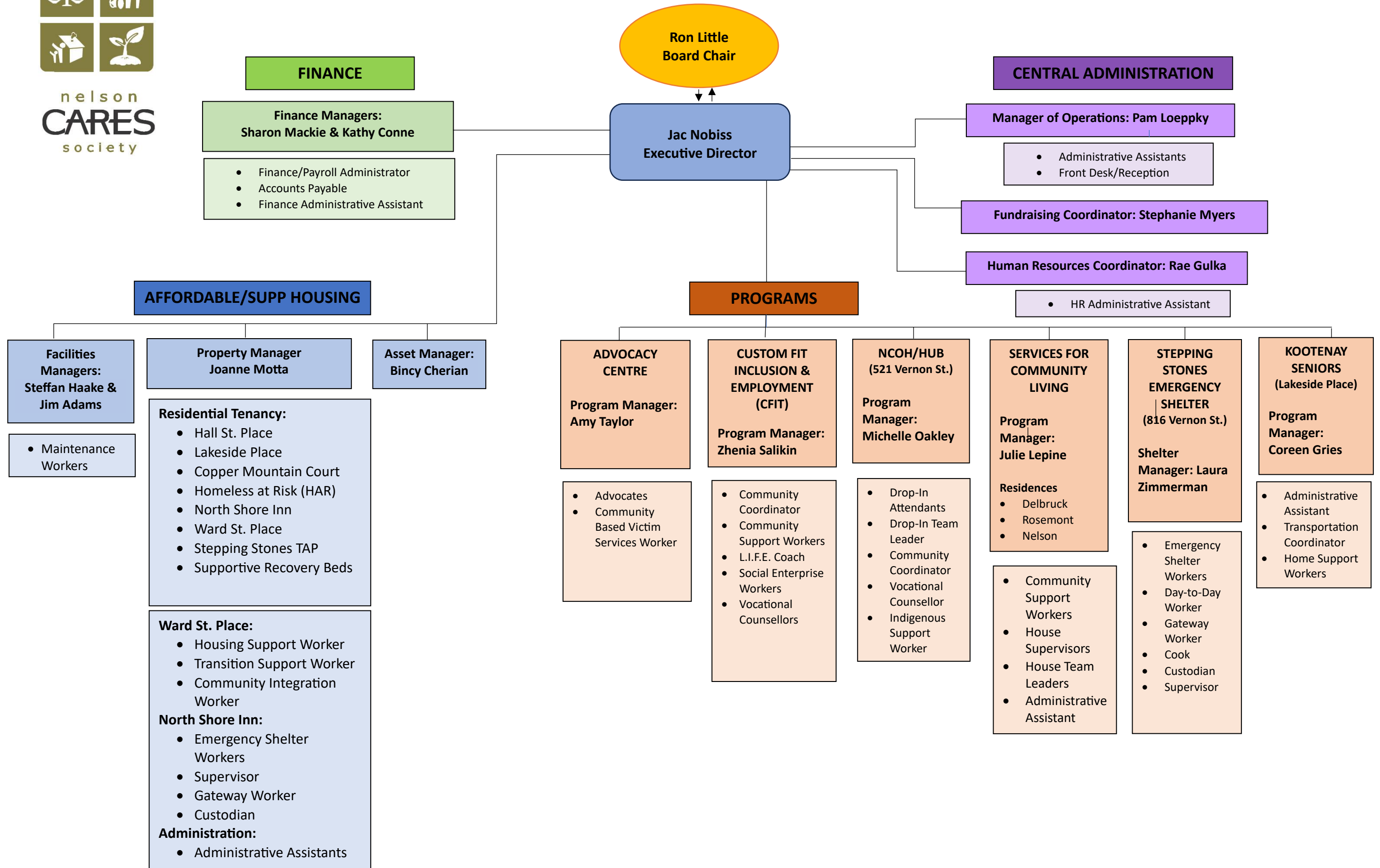




nelson
CARES
society



Ron Little
Board Chair

Jac Nobiss
Executive Director

FINANCE

Finance Managers:
Sharon Mackie & Kathy Conne

- Finance/Payroll Administrator
- Accounts Payable
- Finance Administrative Assistant

CENTRAL ADMINISTRATION

Manager of Operations: Pam Loepky

- Administrative Assistants
- Front Desk/Reception

Fundraising Coordinator: Stephanie Myers

Human Resources Coordinator: Rae Gulka

- HR Administrative Assistant

AFFORDABLE/SUPP HOUSING

PROGRAMS

Facilities Managers:
Steffan Haake & Jim Adams

- Maintenance Workers

Property Manager:
Joanne Motta

- Residential Tenancy:**
- Hall St. Place
 - Lakeside Place
 - Copper Mountain Court
 - Homeless at Risk (HAR)
 - North Shore Inn
 - Ward St. Place
 - Stepping Stones TAP
 - Supportive Recovery Beds

- Ward St. Place:**
- Housing Support Worker
 - Transition Support Worker
 - Community Integration Worker

- North Shore Inn:**
- Emergency Shelter Workers
 - Supervisor
 - Gateway Worker
 - Custodian

- Administration:**
- Administrative Assistants

Asset Manager:
Bincy Cherian

ADVOCACY CENTRE
Program Manager:
Amy Taylor

- Advocates
- Community Based Victim Services Worker

CUSTOM FIT INCLUSION & EMPLOYMENT (CFIT)
Program Manager:
Zhenia Salikin

- Community Coordinator
- Community Support Workers
- L.I.F.E. Coach
- Social Enterprise Workers
- Vocational Counsellors

NCOH/HUB (521 Vernon St.)
Program Manager:
Michelle Oakley

- Drop-In Attendants
- Drop-In Team Leader
- Community Coordinator
- Vocational Counsellor
- Indigenous Support Worker

SERVICES FOR COMMUNITY LIVING
Program Manager:
Julie Lepine

- Residences**
- Delbruck
 - Rosemont
 - Nelson

- Community Support Workers
- House Supervisors
- House Team Leaders
- Administrative Assistant

STEPPING STONES EMERGENCY SHELTER (816 Vernon St.)
Shelter Manager:
Laura Zimmerman

- Emergency Shelter Workers
- Day-to-Day Worker
- Gateway Worker
- Cook
- Custodian
- Supervisor

KOOTENAY SENIORS (Lakeside Place)
Program Manager:
Coreen Gries

- Administrative Assistant
- Transportation Coordinator
- Home Support Workers